

A First-of-Its-Kind Global Asset Disposition Event

Automotive, Energy Storage, EV & Robotics Assets

- Turnkey Manufacturing & Real Estate Opportunities
- Machinery & Equipment
- Intangibles, Trademarks & Patents
- IP Acquisition & Licensing

OVER 1.6 BILLION DOLLARS INVESTED
OPPORTUNITY TO RUN PRODUCTION LINES IN PLACE
ATTRACTIVE REGIONAL & STATE OPERATING INCENTIVES

REAL ESTATE

Secure flexible lease options on Special Opportunity Land at the former Canoo OKC — a premier industrial site positioned for advanced manufacturing, automotive, energy, & mobility ventures.

**BidItUp invites you to participate in the Acquisition, Joint Venture, or Licensing of:
Assets, Intellectual Property & Operational Platforms**

This portfolio represents a strategic path into next-generation mobility & energy ecosystems:

- **Skateboard Platforms** – scalable, modular EV architectures
- **Powertrain & Drive-By-Wire Systems** – engineered for performance & efficiency
- **Advanced Energy Storage Solutions** – innovation in design, integration & sustainability
- **Top Hat Technologies** – adaptable upper-body platforms for multiple use cases

Positioned at the convergence of Transportation, Energy, & Robotics, This Opportunity Offers Venture Capital Investors, Strategic Buyers & Innovators Access to Technologies That Define The Future.

Contact: Tara Shaikh, Tara@biditup.com +1 (818) 508-7034

6 Day Live Webcast Auction of Advanced Manufacturing Assets

- State-of-the-art production assets
- Multi-million-dollar Tesla Manz automated battery module assembly line
- Ladder frame lines for chassis & skateboard production
- Robotic welding cells
- New & Late-Model KUKA robots
- Multi-Million-Dollar Automotive 4 wheel adjustable chassis Dynamometers
- Automotive Assembly, Fanuc Robots
- Energy Storage/Battery Testing
- Advanced DURR adhesive systems
- Over \$10 million in brand-new IT equip.
- Cutting systems, Vision systems
- Lab & testing equipment
- Drive-Through Shot Blast & Curing Ovens
- Full machine shop
- Extensive inventory of: Lithium Ion Batteries, Airbags, Tooling, Auto Components & More



April Day 1-5 Former Assets of Canoo & Various April Day 6 - 140 NEW, 6 Axis Kuka Robots
21-28 ESS, EV, Automotive & Manufacturing Entities 30-May 1 Day 6- Former Assets of Arrival



Multi-Million Dollar Tesla Manz Battery Module Line

Cell Module Production



Cell Prep & Loading



Electrical Testing & Mapping



Busbar Welding & Final Integration

- Tesla Manz Battery Module Line
- Installed Value: \$20M+
- One of the most advanced EV battery assembly lines available in North America.
- Normal lead times appx. 2 years.
- Year of Manufacture: 2023
- Cell Preparation & Automatic Loading for precision and throughput.
- ICB & Stiffener Installation ensuring structural integrity.
- Busbar Welding & Final Integration for pack reliability.
- End-of-Line Transfer for continuous production readiness.
- Automated Electrical Testing & Mapping for quality assurance.
- Designed for high-volume, scalable EV battery module production.

Fully Automated Ladder Frame Production Line

Multi-Cell Robotic Skateboard Chassis Production

IP AVAILABLE
FOR QUALIFIED
PARTIES



Integrated production line for EV ladder frames and skateboard chassis assemblies



Built with Modular Scalability



OEM Throughput

- Utica Trunnion Turntables for high-precision rotation and positioning.
- SMC Controlled and Safety Automated Actuated Jigs for Parts Assembly
- Valiant Pick-and-Place Crane for automated material handling. (tonnage)
- Hundreds of FANUC Robots outfitted with MIG welding attachments, feeders, reamers, and dressers for fully automated joining processes.
- Allen-Bradley PLC Controls, SMC pneumatic automation and safety systems for monitoring, interlocks, and process reliability.
- Designed for modular EV platform scalability, enabling rapid reconfiguration for multiple vehicle programs.
- Built-in safety enclosures, light curtains, and guarding for compliance and operator protection.
- Proven OEM-grade throughput – ideal for Tier-1 suppliers and advanced automotive manufacturers.

Automated Robotic Multi-Cell Lines

Tophat Assembly



OVER APPX.
\$15,000,000
INSTALLED

Chassis Marriage



Robotic Welding & Precision Tools



Production-Ready Line

Semi Automatic robotic multi-cell line for vehicle body assembly. Includes FANUC robotic arms for arc welding, air lift support tables with pneumatic jigs, and Atlas Copco nut runners for precision fastening to OEM torque specs. Integrated crane systems enable the marriage of the skateboard chassis and top hat body, delivering a turnkey, production-ready solution for high-volume EV manufacturing

140 NEW Kuka Robots

5 & 6 Axis Models



OVER
\$20,000,000
INSTALLED

New - In Original Packaging Units Available



Automation Ready



High-Precision Control

- 140 KUKA industrial robots, available in both 5-axis and 6-axis configurations.
- Designed for welding, material handling, assembly, and automation applications, Delivering OEM-level performance and flexibility.
- Heavy-duty linear track designed to extend KUKA robot work envelopes for large part handling, welding, and assembly automation.
- Available Models Include:
 - KUKA KR280 R3080 - Late-model, high payload (90–300 kg) robots
 - KUKA KR360 R2830 FDS UL - Heavy duty (300–1300 kg) robots with broad application versatility
 - KUKA KR120 R3100-2 - Brand-new, mid-size units with 3100mm reach
- All units include KUKA smartPAD-2, KR C4 NA controls, and advanced software packages such as SafeOperation, EtherNet/IP, and RemoteSupportView. Most units are bundled with mounting kits, cabling, and accessories, ready for immediate integration.

2 State-Of-The-Art Automotive Dynamometers

APPROXIMATE
\$2,000,000 NEW

Four-Wheel Chassis (DVT)

Vehicle Development Testing

Vehicle Calibration

Performance Validation

- Burke E. Porter Dynamic Vehicle Test Systems (DVT) 4-wheel chassis dyno (over appx \$2M new) with forward & reverse drive and adjustable wheelbase for any vehicle development program.
- Simulates real-world road conditions to develop, calibrate and validate attributes including end of the line testing. e

Durr Adhesive Machinery & Equipment

Precision Bonding



Robotic Applications



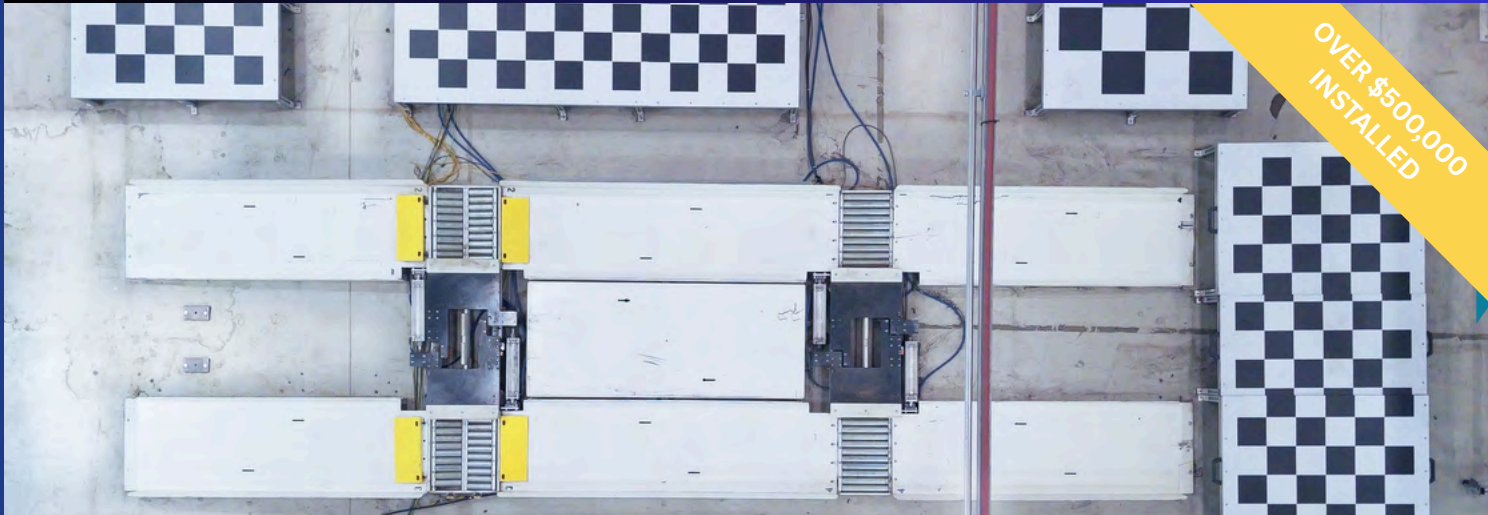
Sealant & Glue Lines



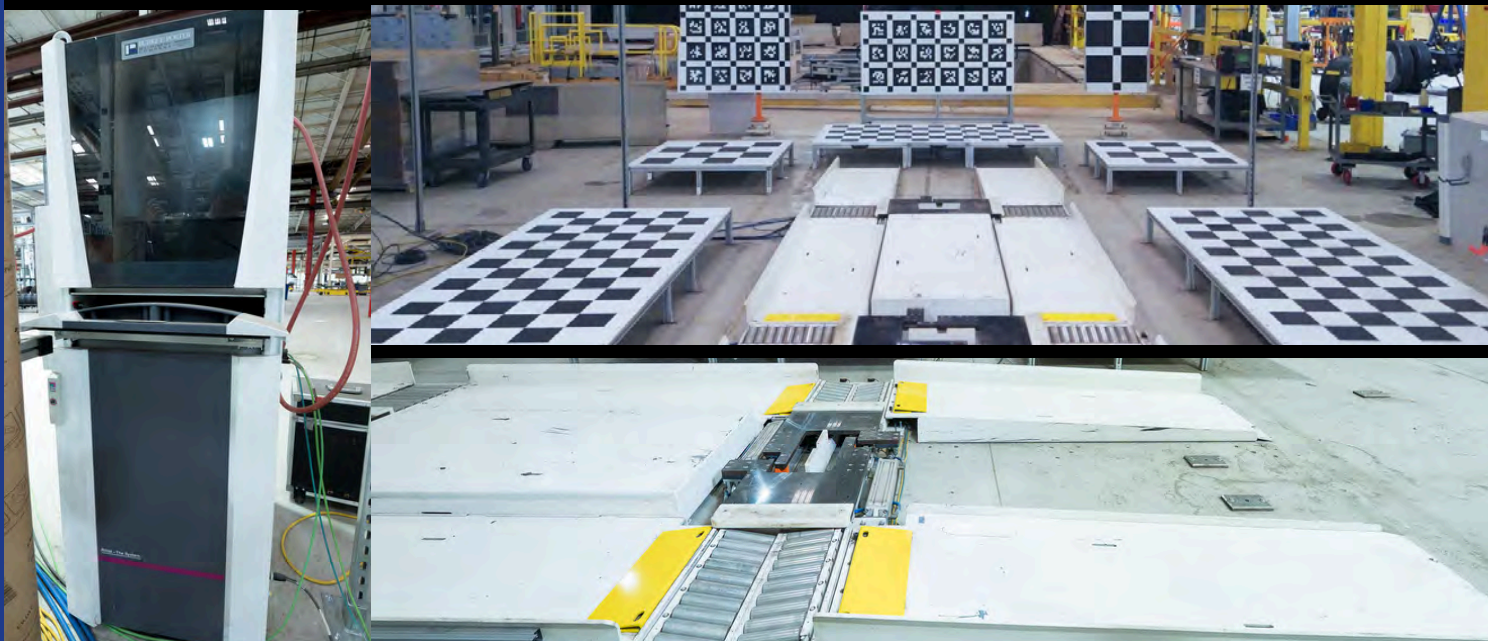
High-Capacity Dispensers

- State-of-the-art robotic adhesive lines for precision gluing, sealing, and bonding of EV battery packs and vehicle structures.
- Featuring high-capacity dispensers with integrated quality monitoring, these Durr systems deliver OEM-grade accuracy and consistency for high-volume automotive production. (model numbers, serial numbers, years)

End of Line System | Automotive Vision Systems ADAS (Advanced Driver Assistance System)



ADAS Alignment



Vision & Calibration

- Automotive Vision & Calibration Systems
- Advanced Driver Assistance Systems (ADAS) calibration tools.
- Automated camera and sensor alignment stations.
- Supports safety-critical autonomous and driver-assist features.
- End of Line Systems | Burke E. Porter Machinery Company
- More Info Coming Soon - www.BidItUp.com

ZEISS CMM

OEM LEVEL QA

OVER \$1,500,000
INSTALLED



Fully Loaded Large Scale Zeiss CMM



Metrology & Precision Measurement Systems



- Zeiss Coordinate Measuring Machine (CMM) equipped with Carfit fixturing systems and multiple probe kits for versatile, high-accuracy inspection. More info coming soon: www.BidItUp.com
- Creaform 3D Scanners (2 units) for portable, non-contact measurement and reverse engineering.
- Faro Arm with Faro Head for fast, flexible dimensional checks on the shop floor.
- Comprehensive suite of metrology probes and accessories, Essential for Tier-1 and OEM-level QA of critical components.

Large Scale EV Battery Testing

Validation Tools “Battery Pilot Line”



OEM Battery Validation



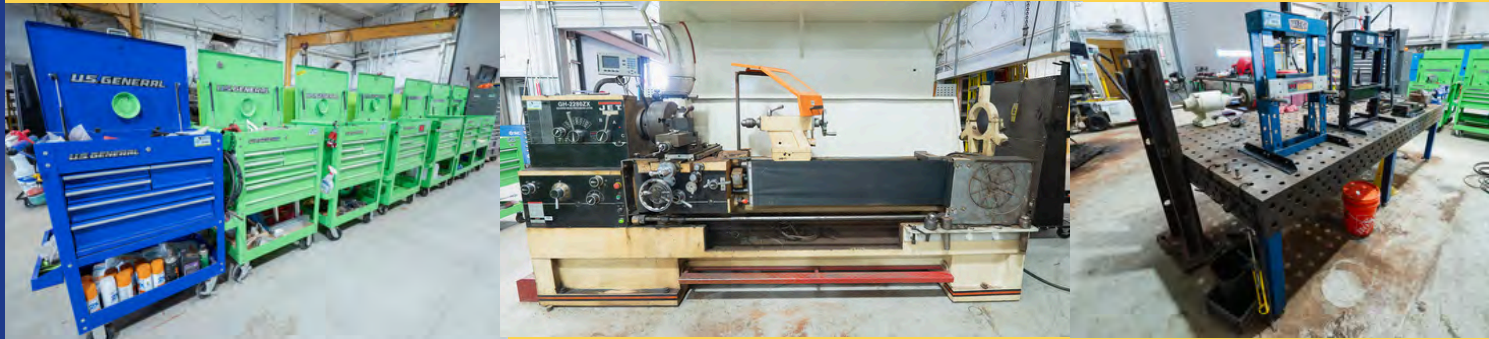
Battery Test Equipment

- State-of-the-art Chroma 17010 reliability & BC-170 battery test systems for precise charge/discharge testing, cycle life, and BMS validation. Chroma Systems Solutions
- NH Research (NHR) 9200-/-9300-series battery test/emulation systems, scalable from ~100 kW cabinets to over 2.4 MW with high voltage (600-1200V), bidirectional load/discharge, and regenerative power features. Advanced Test Equipment Corp -ATEC+2NI+2
- These testers are backordered, in high demand, and built for R&D labs, OEM battery validation, electric vehicle development, and production QA.

General Machine Shop Tool Room



Welding



Machining



Shop Tools

- Fully Equipped Shop with Mills, Lathes, Welding Tables, Miller welders, supported by a wide range of Toolboxes, Hand Tools, and Precision Equipment. Ideal for Fabrication, Repairs, and Maintenance and Much More!

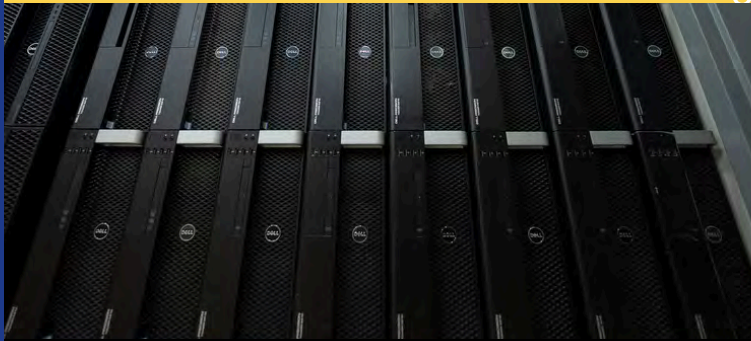
Enterprise IT

Infrastructure Hardware



OVER \$XXX
IN NEW
EQUIPMENT

Networking Gear



Server Racks



Specialty Tech

- Extensive inventory of servers racks and enterprise-grade hardware, designed for high-demand manufacturing and software development.
- Cisco switches, Aruba power supplies, APC UPS systems, and other core networking hardware — much of it brand new in box, the rest well-maintained.
- Specialty items including Microsoft HoloLens augmented reality glasses and Corsair high-performance components.
- Built to power the IT backbone of a major EV facility, supporting software development, vehicle engineering, and automated chassis/assembly line operations.

Drive through Shot Blasts & Ovens End to End Complete Paint Systems



Surface Prep



Powder Coating

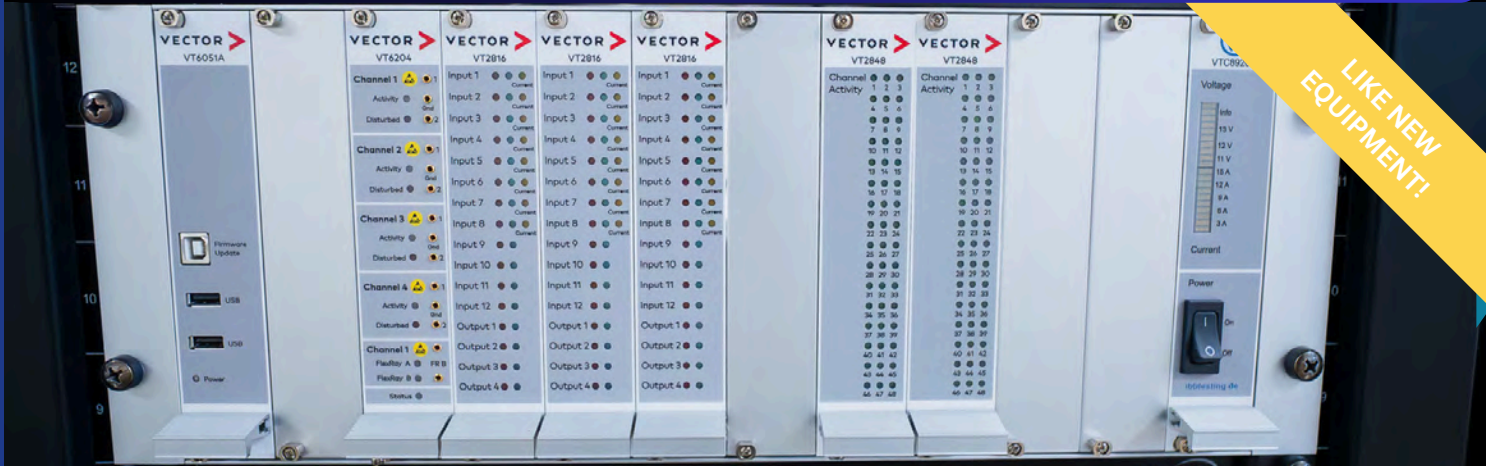


Curing Ovens & Paint Booths

- Blastec Shot Blast & Shot Peen System for surface prep of frames and bodies.
- Multi-Bay Powder Coating & Curing Ovens with integrated chain conveyor system for continuous production.
- Two Automotive Paint Booths for high-quality finishing and coatings.

Network Development Tools

Automotive ECU



Vehicle Bus & Network Testing Software



Automated Test Systems

Advanced Sensor Simulation

- Featuring Vector, National Instruments, dSPACE, and Konrad Technologies – Industry-Leading Tools for ECU Testing, Vehicle Network Simulation, Hardware-In-The-Loop Validation, and Ultrasonic Sensor Simulation powering next-generation ADAS and Autonomous Vehicle Development.

EV Lab & Quality Assurance

Development & Testing Equipment



CONTACT US FOR
INSPECTION

Validation Equipment



Battery Test Systems



Data & Diagnostics

- Comprehensive lab assets for battery development and quality assurance, including Spica Pilot BT battery tester, Keysight Scienlab Charging Discovery System, Arbin battery testers, 3D Printers, TestEquity thermo-electric chambers, oscilloscopes, and more. A complete package of high-end tools designed to support R&D, validation, and production testing in advanced EV programs and Much More.

BidItUp

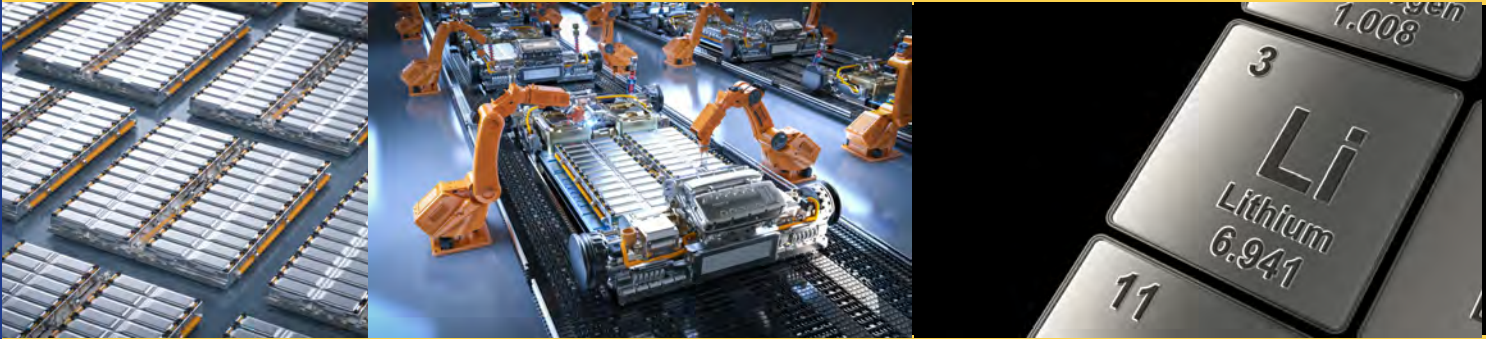
AUCTIONS WORLDWIDE

THE GLOBAL LEADER
IN ASSET CONVERSION
OF AUTOMOTIVE, BATTERY,
ENERGY & EV ASSETS

Lithium Ion Battery Surplus

MORE INFO
COMING SOON

Excess Surplus of Lithium Batteries



More Info Coming Soon

Plant Support Equipment



www.BidItUp.com

Precision & High End Hand Tools



SOMETHING FOR
EVERY MACHINE
SHOP & PLANT!

Toolboxes & Storage



Power Tools



Precision Tools

- Extensive selection of professional-grade tools and toolboxes used for fabrication, research & development, and automotive manufacturing and assembly. Includes power tools, complete socket sets, torque wrenches, high-voltage safety tools, and more. Well-maintained, high-end brands – from everyday shop tools to specialized equipment for vehicle assembly.

Complete Large Plant Support

Air & Power



Industrial Air Systems



High-Capacity Power

Plant Infrastructure

- (3) Gardner Denver L55-75CF Air Compressors (2023) – 100 HP units, air-cooled, 4,410 lb capacity each, like-new condition.
- (2) Eaton Dry-Type Distribution Transformers (2023) – 75 kVA, 480V Delta / 208Y/120V, built for heavy-duty industrial power distribution.
- Ready to ship, offering turnkey compressed air and electrical infrastructure for any large-scale manufacturing facility. More Info Coming Soon: www.BidItUp.com

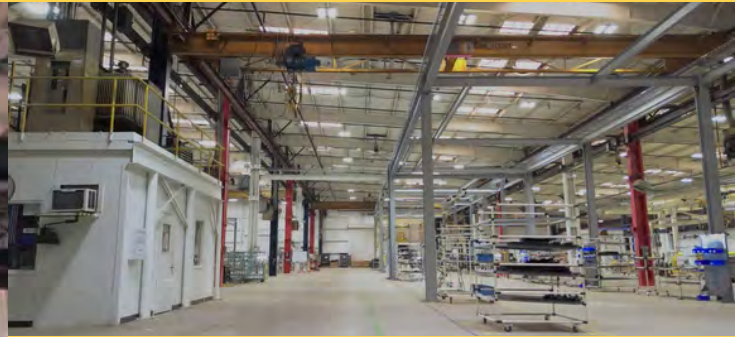
BidItUp

AUCTIONS WORLDWIDE

THE GLOBAL LEADER
IN ASSET CONVERSION
OF AUTOMOTIVE, BATTERY,
ENERGY & EV ASSETS

Plant Support Cranes

MORE INFO
COMING SOON

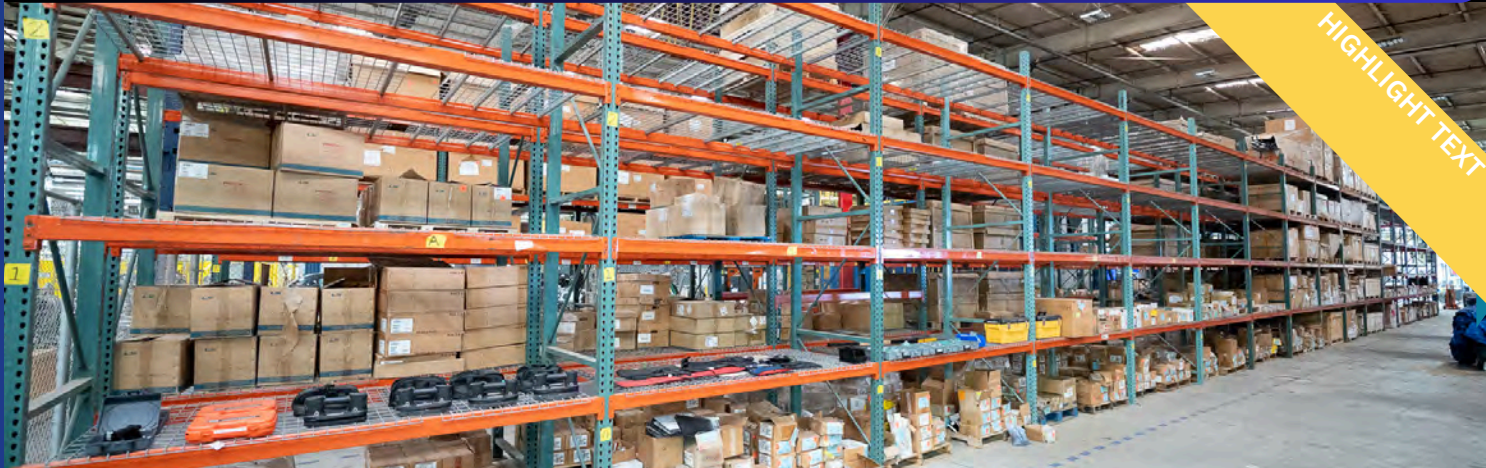


More Info Coming Soon

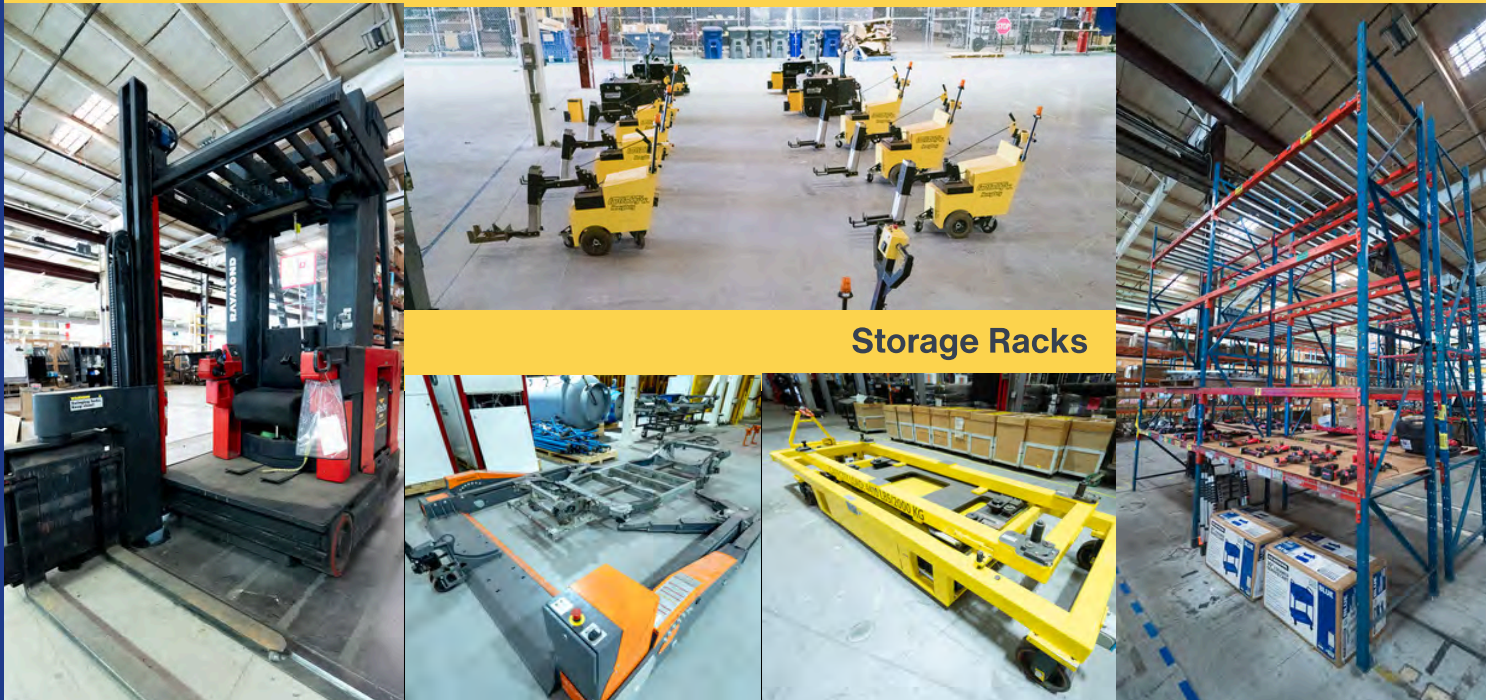


www.BidItUp.com

Material Handling and Storage Racking Plant Support Equipment



Frame Movers



Storage Racks

Lifts & Rolling Tables

- Finkbeiner Automated Frame Movers – engineered to transport and position complete ladder frames safely and efficiently within production lines.
- Raymond Pallet Lift (Model 537-CSR30T) – high-reach industrial lift for heavy-duty material flow and warehouse support.
- Heavy-Duty Lift Tables – 4,410 lb / 2,000 kg capacity units designed for safe raising and handling of EV chassis and large assemblies.
- Multiple Industrial Pallet Racks – extensive storage systems for parts, tooling, and components.
- Complete suite of material carts, racks, and handling solutions to streamline plant operations.

Real Estate & Production In Place Opportunities

SPECIAL
OPPORTUNITY
LAND



Turnkey EV, Auto, ESS Manufacturing Facility



In-Place Automotive Systems



In Place Production Assets

- Turnkey Manufacturing Facility – modern, large-scale EV plant with shop machine cranes and extensive infrastructure ready to support high-volume production.
- Zeiss CMM & Metrology Lab – precision quality control systems to support OEM-level manufacturing.
- Automotive Dynamometers – state-of-the-art end-of-line testing and calibration systems for drivetrain and performance validation.
- Robotic Work Cells – fully integrated welding, assembly, and automation lines with FANUC robots and Allen-Bradley controls.
- Dürr Fluid Filling Station – advanced systems for automotive vehicle fluid filling and process automation.
- Industrial Curing Ovens & Powder Coating Lines – designed for large-format automotive parts and structural components.

A First-of-Its-Kind Global Asset Disposition Event

Automotive, Energy Storage, EV & Robotics Assets

- Turnkey Manufacturing & Real Estate Opportunities
- Machinery & Equipment
- Intangibles, Trademarks & Patents
- IP Acquisition & Licensing

OVER 1.6 BILLION DOLLARS INVESTED
OPPORTUNITY TO RUN PRODUCTION LINES IN PLACE
ATTRACTIVE REGIONAL & STATE OPERATING INCENTIVES

Secure flexible lease options on Special Opportunity Land at the former Canoo OKC — a premier industrial site positioned for advanced manufacturing, automotive, energy, & mobility ventures.

REAL ESTATE

BidItUp invites you to participate in the Acquisition, Joint Venture, or Licensing of:
Assets, Intellectual Property & Operational Platforms.

FOR INFORMATION ON THE UNIQUE OPPORTUNITIES AVAILABLE CONTACT US:
TARA@BIDITUP.COM (818) 508-7034

FULL LOT LIST COMING SOON! MANY ASSETS BEING ADDED!

FOR INFORMATION ON HOW TO REGISTER, HOW TO BID, ASSET QUESTIONS,
INTANGIBLE ASSET QUESTIONS, REAL ESTATE INTEREST OR INSPECTION & TERMS &
CONDITIONS OF SALE PLEASE VISIT:

www.BidItUp.com

6 Day Live Webcast Auction of Advanced Manufacturing Assets

- State-of-the-art production assets
- Multi-million-dollar Tesla Manz battery module assembly line
- Ladder lines for chassis & skateboard production
- Robotic welding cells
- New & Late-Model KUKA robots
- Multi-Million-Dollar Automotive Dynamometers
- Automotive Assembly, Fanuc Robots
- Energy Storage/Battery Testing
- Advanced DURR adhesive systems
- Over \$10 million in brand-new IT equip.
- Cutting systems, Vision systems
- Lab & testing equipment
- Drive-Through Shot Blast & Curing Ovens
- Full machine shop
- Extensive inventory of: Lithium Batteries, Airbags, Tooling, Auto Components & More



April Day 1-5 Former Assets of Canoo & Various
21-28 ESS, EV, Automotive & Manufacturing Entities

April Day 6 - 140 NEW, 6 Axis Kuka Robots
30-May 1 Day 6- Former Assets of Arrival

