



Industrial Machinery & Equipment > BIDITUP Auctions Worldwide > **Manitowoc Beverage Systems**

Manitowoc Beverage Systems

by BIDITUP Auctions Worldwide

🕒 Event Begins: Tuesday, March 10, 11:00 AM Pacific
First lots ends Thursday, March 12, 11:00 AM Pacific
Last lot ends Thursday, March 12, 2:30 PM Pacific

Ice Making Machinery Manufacturing Equipment



Howe Richardson XL 100lb Scale

Lot #1A (Sale Order 1 of 71)

Howe Richardson XL 100lb Scale



Manitowoc Ice Machine

Lot #2 (Sale Order 2 of 71)

Manitowoc Ice Machine



(1) Werner 8' Ladder and (1) Louisville 6' Ladder

Lot #3 (Sale Order 3 of 71)

(1) Werner 8' Ladder and (1) Louisville 6' Ladder



DeWalt 14" Chop Saw, Model D28700, S/N 385183

Lot #4 (Sale Order 4 of 71)

DeWalt 14" Chop Saw, Model D28700, S/N 385183

**Little Wonder High Performance Vac, 6 HP Motor**

Lot #5 (Sale Order 5 of 71)

Little Wonder High Performance Vac, 6 HP Motor

**Dayton Wet/Dry Vacuum, Model 3VE20A**

Lot #6 (Sale Order 6 of 71)

Dayton Wet/Dry Vacuum, Model 3VE20A

**Dayton 8" Bench Grinder, 3/4 hp, Model 2LKR9, S/N 091000011**

Lot #7 (Sale Order 7 of 71)

Dayton 8" Bench Grinder, 3/4 hp, Model 2LKR9, S/N 091000011

**Craftsman 15" Floor Drill Press, 12 Speed, 5/8" Chuck, 1 HP Motor, 12" x 12**

Lot #8 (Sale Order 8 of 71)

Craftsman 15" Floor Drill Press, 12 Speed, 5/8" Chuck, 1 HP Motor, 12" x 12" Table, Model 137229150, S/N RD522275

**Dust Collector, w/ (2003) 3 HP Induction Motor**

Lot #9 (Sale Order 9 of 71)

Dust Collector, w/ (2003) 3 HP Induction Motor

**Lagun Vertical Mill, Model FTV-2, 10" x 50" table, w/ Kurt bench vise (Mode**

Lot #10 (Sale Order 10 of 71)

Lagun Vertical Mill, Model FTV-2, 10" x 50" table, w/ Kurt bench vise (Model D675, S/N 140908), Newall sapphire DRO

**Misc. Cutting Tools, HSS and carbide endmills, carbide inserts, countersink**

Lot #10A (Sale Order 10 of 71)

Misc. Cutting Tools, HSS and carbide endmills, carbide inserts, countersinks, corner rounding.

**Misc. Inspection, depth micrometer, indicators, micrometers**

Lot #10B (Sale Order 10 of 71)

Misc. Inspection, depth micrometer, indicators, micrometers

**Magnaflux Spotcheck Dye Penetrant Kit**

Lot #10C (Sale Order 10 of 71)

Magnaflux Spotcheck Dye Penetrant Kit

**Two Coiffing 300 lbs. Capacity, Model TMM-140 Air Manipulator Hoists**

Lot #10D (Sale Order 10 of 71)

Two Coiffing 300 lbs. Capacity, Model TMM-140 Air Manipulator Hoists

**(1980) Grob Band Saw, Model 4V-18, S/N 3705**

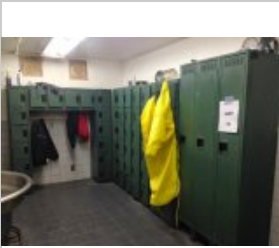
Lot #11 (Sale Order 11 of 71)

(1980) Grob Band Saw, Model 4V-18, S/N 3705

**CompAir Kellogg 30hp Air Compressor (no air tank)**

Lot #12 (Sale Order 12 of 71)

CompAir Kellogg 30hp Air Compressor (no air tank)

**Lot of Lockers**

Lot #13 (Sale Order 13 of 71)

Lot of Lockers

**Pallet Racking**

Lot #14 (Sale Order 14 of 71)

Pallet Racking

**Two Heavy Duty Work Tables**

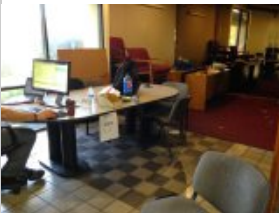
Lot #15 (Sale Order 15 of 71)

Two Heavy Duty Work Tables

**Lot of Conveyor**

Lot #16 (Sale Order 16 of 71)

Lot of Conveyor

**Contents of Offices (Conference Room, Two Offices), No Computers, Phones or**

Lot #17 (Sale Order 17 of 71)

Contents of Offices (Conference Room, Two Offices), No Computers, Phones or other Electronics, No Paperwork, only furniture

**2010 DiversiTech Downdraft table, 42" x 49"**

Lot #18 (Sale Order 18 of 71)

2010 DiversiTech Downdraft table, 42" x 49"

**2010 DiversiTech Downdraft table, 42" x 49"**

Lot #19 (Sale Order 19 of 71)

2010 DiversiTech Downdraft table, 42" x 49"

**2010 DiversiTech Downdraft table, 42" x 49"**

Lot #20 (Sale Order 20 of 71)

2010 DiversiTech Downdraft table, 42" x 49"

**5,000 lb Nissan Optima 50 Forklift, S/N 2KU2W330, Propane**

Lot #21 (Sale Order 21 of 71)

5,000 lb Nissan Optima 50 Forklift, S/N 2KU2W330, Propane

**3,500 lb Clark Forklift, Model GCS17S, Propane, Side Shift, S/N G127-01**

Lot #22 (Sale Order 22 of 71)

3,500 lb Clark Forklift, Model GCS17S, Propane, Side Shift, S/N G127-0132-7650

**2002 Isuzu NQR 20,000lb 16' Stake Bed Truck, 133,610 Miles, 17,500 GVW,**

Lot #23 (Sale Order 23 of 71)

2002 Isuzu NQR 20,000lb 16' Stake Bed Truck, 133,610 Miles, 17,500 GVW, VIN: JALE5B14927900523

**Clinton Power DC Power Supply, Model S1009C0S, S/N 38442, 9kw**

Lot #24 (Sale Order 24 of 71)

Clinton Power DC Power Supply, Model S1009C0S, S/N 38442, 9kw

**2011 RK Fabrication, Model V-S2000, S/N 00168 Fiberglass Vertical Fume Scrubber System**

Lot #25 (Sale Order 25 of 71)

2011 RK Fabrication, Model V-S2000, S/N 00168 Fiberglass Vertical Fume Scrubber System

**1/2 ton yellow jib crane attached to wall**

Lot #26 (Sale Order 26 of 71)

1/2 ton yellow jib crane attached to wall

**Pre Heat Oven**

Lot #27 (Sale Order 27 of 71)

Pre Heat Oven

**2011 Baker 900lb Aluminum Melting Crucible Furnace w/ Controller, Model 900**

Lot #28 (Sale Order 28 of 71)

2011 Baker 900lb Aluminum Melting Crucible Furnace w/ Controller, Model 900 RA, 1,000,000 BTU, Gas/Propane

**2011 Baker 900lb Aluminum Melting Crucible Furnace w/ Controller, Model 900**

Lot #29 (Sale Order 29 of 71)

2011 Baker 900lb Aluminum Melting Crucible Furnace w/ Controller, Model 900 RA, 1,000,000 BTU, Gas/Propane

**2011 Baker 900lb Aluminum Melting Crucible Furnace w/ Controller, Model 900**

Lot #30 (Sale Order 30 of 71)

2011 Baker 900lb Aluminum Melting Crucible Furnace w/ Controller, Model 900 RA, 1,000,000 BTU, Gas/Propane

**2011 Baker 900lb Aluminum Melting Crucible Furnace w/ Controller, Model 900**

Lot #31 (Sale Order 31 of 71)

2011 Baker 900lb Aluminum Melting Crucible Furnace w/ Controller, Model 900 RA, 1,000,000 BTU, Gas/Propane

**2011 Baker 900lb Aluminum Melting Crucible Furnace w/ Controller, Model 900**

Lot #32 (Sale Order 32 of 71)

2011 Baker 900lb Aluminum Melting Crucible Furnace w/ Controller, Model 900 RA, 1,000,000 BTU, Gas/Propane

**Femtec Model FV-40 CNC Vertical Machining Center, Parts Machine, Please Ins**

Lot #33 (Sale Order 33 of 71)

Femtec Model FV-40 CNC Vertical Machining Center, Parts Machine, Please Inspect

**RF Geared Head Drill Press with Milling & Drilling Head, 1 HP**

Lot #34 (Sale Order 34 of 71)

RF Geared Head Drill Press with Milling & Drilling Head, 1 HP

**Burr King Model 562 Belt Sander**

Lot #35 (Sale Order 35 of 71)

Burr King Model 562 Belt Sander

**Writable with Reelcraft Hose Reels and Asst. Air Hose**

Lot #36 (Sale Order 36 of 71)

Writable with Reelcraft Hose Reels and Asst. Air Hose

**Hewlett Packard Designjet 750C Plotter**

Lot #37 (Sale Order 37 of 71)

Hewlett Packard Designjet 750C Plotter

**Eight Steel Carts**

Lot #38 (Sale Order 38 of 71)

Eight Steel Carts

**Eight Wall Mounted Fans**

Lot #39 (Sale Order 39 of 71)

Eight Wall Mounted Fans

**Two Steel Welding Tables**

Lot #40 (Sale Order 40 of 71)

Two Steel Welding Tables

**Three Steel Work Tables**

Lot #41 (Sale Order 41 of 71)

Three Steel Work Tables

**Oxy Acetylene Torch Rig (No Tanks)**

Lot #42 (Sale Order 42 of 71)

Oxy Acetylene Torch Rig (No Tanks)

**Three Shop Carts**

Lot #43 (Sale Order 43 of 71)

Three Shop Carts

**Eight Steel Carts**

Lot #44 (Sale Order 44 of 71)

Eight Steel Carts

**Four Pallet Jacks**

Lot #45 (Sale Order 45 of 71)

Four Pallet Jacks

**Securall Model P1120 120 Gal. Flammable Cabinet**

Lot #46 (Sale Order 46 of 71)

Securall Model P1120 120 Gal. Flammable Cabinet

**Shelves, Table and Remaining Content Along One Wall (Please Inspect)**

Lot #47 (Sale Order 47 of 71)

Shelves, Table and Remaining Content Along One Wall (Please Inspect)

**Shelves and Remaining Content (Please Inspect)**

Lot #48 (Sale Order 48 of 71)

Shelves and Remaining Content (Please Inspect)

**Four Tweco Welding Coolers**

Lot #49 (Sale Order 49 of 71)

Four Tweco Welding Coolers

**Welding Table & Vise**

Lot #50 (Sale Order 50 of 71)

Welding Table & Vise

**Welding Table, Vise and Contents (no grinder)**

Lot #51 (Sale Order 51 of 71)

Welding Table, Vise and Contents (no grinder)

**Remaining Content of Storeroom (Please Inspect)**

Lot #52 (Sale Order 52 of 71)

Remaining Content of Storeroom (Please Inspect)

**Lot of Conveyors (No Pallet Racking, No Forklift Forks)**

Lot #53 (Sale Order 53 of 71)

Lot of Conveyors (No Pallet Racking, No Forklift Forks)

**All Pallet Racking in Yard (No Conveyor)**

Lot #54 (Sale Order 54 of 71)

All Pallet Racking in Yard (No Conveyor)

**Acme Model FRI-15-24, S/N 2045, 15 KVA Spot Welder**

Lot #55 (Sale Order 55 of 71)

Acme Model FRI-15-24, S/N 2045, 15 KVA Spot Welder

**Custom Welding Machine**

Lot #56 (Sale Order 56 of 71)

Custom Welding Machine

**Two Jib Cranes (only jib cranes, no overhead hoist system components, see I**

Lot #57 (Sale Order 57 of 71)

Two Jib Cranes (only jib cranes, no overhead hoist system components, see lot 58)

**Overhead Hoist / Manipulator System, includes legs and beams in yard and an**

Lot #58 (Sale Order 58 of 71)

Overhead Hoist / Manipulator System, includes legs and beams in yard and another set inside building

**Two Cabinets**

Lot #59 (Sale Order 59 of 71)

Two Cabinets

**Pallet of Fire Extinguishers**

Lot #60 (Sale Order 60 of 71)

Pallet of Fire Extinguishers

**Plastic Tank & Stand**

Lot #61 (Sale Order 61 of 71)

Plastic Tank & Stand

**Lot of Office Cabinets & Misc.**

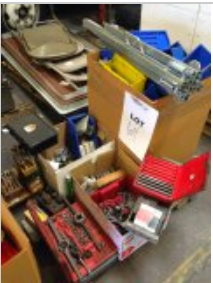
Lot #62 (Sale Order 62 of 71)

Lot of Office Cabinets & Misc.

**Empty Miller Welder Carrying Case & Magnetic Base**

Lot #63 (Sale Order 63 of 71)

Empty Miller Welder Carrying Case & Magnetic Base

**Misc. Tools**

Lot #64 (Sale Order 64 of 71)

Misc. Tools

**Folding Table and Charis**

Lot #65 (Sale Order 65 of 71)

Folding Table and Charis

**Mini Refrigerators and Microwaves**

Lot #66 (Sale Order 66 of 71)

Mini Refrigerators and Microwaves



Misc. Office Supplies

Lot #67 (Sale Order 67 of 71)

Misc. Office Supplies